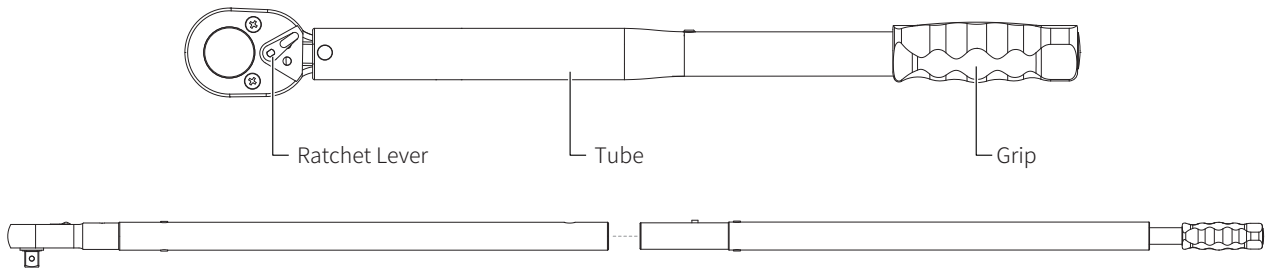
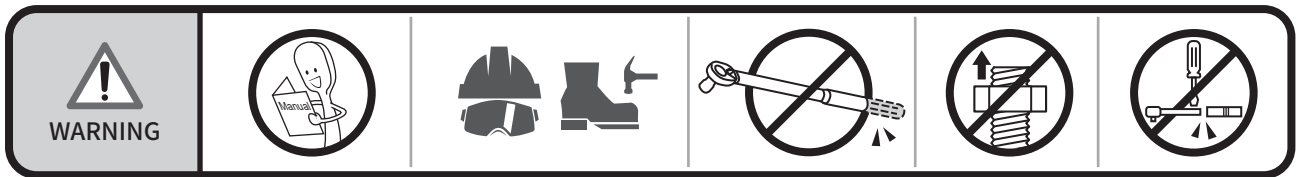


# Torque Wrench, Pre-Set Type OPERATION MANUAL



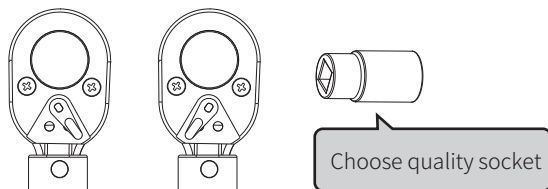
## BEFORE STARTING

1. Study this instruction before use.
2. This torque wrench as calibrated and tested before leaving the factory is certified to meet the current standard specification and has an accuracy of  $\pm 4\%$ .
3. **THIS TOOL IS A PRECISION MEASUREMENT AND DESIGNED FOR MANUAL TIGHTENING FASTENERS ONLY. DO NOT USE IT AS A NUT BREAKER OR FOR ANY OTHER PURPOSE.**
4. Over torque will cause tool damage and personal injury.
5. Do not use this tool near rotating machinery.
6. Disassemble this tool or make any adjustments will result of losing accuracy and void the warranty.
7. Do not continuously apply force after hear click or feel shock.
8. Do not use any format of extension on the handle of the tool. This will not only damage the tool, also affect the accuracy.
9. Do not immerse grease inside ratchet head. It may cause unexpected damage.
10. Use special care at minimum torque setting.
11. Please wear gloves and goggles when working.

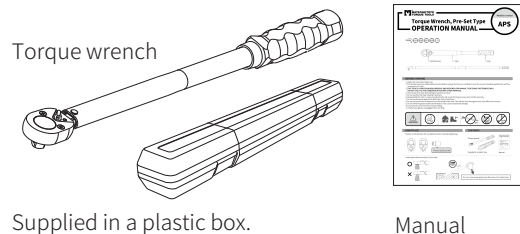


## HOW TO USE

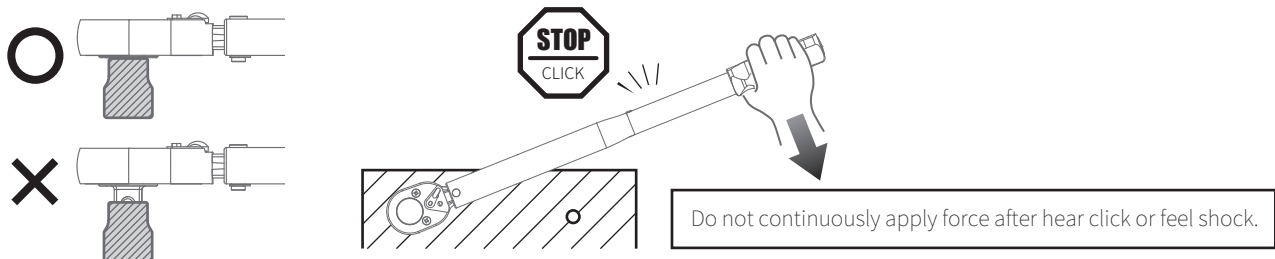
Position of ratchet lever for clockwise/counter clockwise tightening.



## CONTENTS

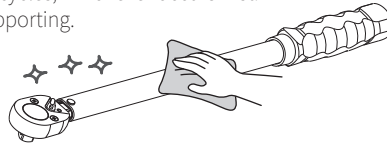


Insert square drive securely to the socket.



## MAINTENANCE AND STORAGE

1. If this tool has not been used for a period of time, it shall be preloaded several times to allow internal lubricant to recoat.
2. Clean this tool by wiping with a clean cloth after operation and storage in a dry environment.  
Do not dip any type of liquid in this tool. This may damage the internal of this tool.
3. This tool should be recalibrated a period of 12 months, or 5,000 cycles, whichever occurs first.  
To contact with local vendor, an authorized repair center for supporting.



## TORQUE CONVERSION FACTORS

Units to be converted	Corresponding unit								
	=mN·m	=cN·m	=N·m	=ozf·in	=lbf·in	=lbf·ft	=gf·cm	=kgf·cm (kp·cm)	=kgf·m (kp·m)
1 mN·m	1	0,1	0,001	0,142	0,009	0,0007	10,2	0,01	0,0001
1 cN·m	10	1	0,01	1,416	0,088	0,007	102	0,102	0,001
1 N·m	1000	100	1	141,6	8,851	0,738	10197	10,2	0,102
1 ozf·in	7,062	0,706	0,007	1	0,0625	0,005	72	0,072	0,0007
1 lbf·in	113	11,3	0,113	16	1	0,083	1152,1	1,152	0,0115
1 lbf·ft	1356	135,6	1,356	192	12	1	13826	13,83	0,138
1 gf·cm	0,098	0,01	0,0001	0,014	0,0009	0,00007	1	0,001	0,00001
1 kgf·cm(kp·cm)	98,07	9,807	0,098	13,89	0,868	0,072	1000	1	0,01
1 kgf·m(kp·m)	9807	980,7	9,807	1389	86,8	7,233	100000	100	1

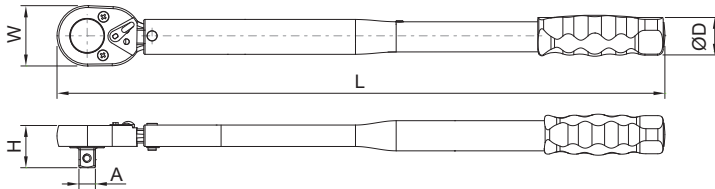
Conversion-formula:

Units to be converted × Factor=Corresponding unit

Example: Convert 5 lbf·ft into cN·m

Solution: 5 × 135,6 = 678 cN·m

## SPECIFICATION



### Metric

ITEM NO.	⊙ A	Range	W	H	L	ØD	KG
APS-12N	1/4"	2-12 Nm	24.0	18.0	170	27.4	0.22
APS-50N	3/8"	5-50 Nm	28.6	23.5	300	37.3	0.56
APS-100N	3/8"	20-100 Nm	37.0	27.7	350	37.3	0.76
APS-200N	1/2"	50-200 Nm	46.0	33.0	500	37.3	1.38
APS-300N	1/2"	60-300 Nm	46.8	33.2	540	37.3	3.60
APS-500N	3/4"	100-500 Nm	64.0	54.1	560	37.3	5.90
APS-800N	3/4"	150-800 Nm	64.0	54.1	930	37.3	6.30
APS-1200N	3/4"	240-1200 Nm	65.8	57.0	997	37.3	8.90
	1"		79.7	66.8			
APS-1500N	1"	300-1500 Nm	79.7	66.8	1729	37.3	11.70

### SAE

Accuracy: ± 4%

ITEM NO.	⊙ A	Range	W	H	L	ØD	KG
APS-120i	1/4"	20-120 in.lb	24.0	18.0	170	27.4	0.22
APS-40F	3/8"	4-40 ft.lb	28.6	23.5	300	37.3	0.56
APS-80F	3/8"	10-80 ft.lb	37.0	27.7	350	37.3	0.76
APS-150F	1/2"	40-150 ft.lb	46.0	33.0	500	37.3	1.38
APS-230F	1/2"	60-230 ft.lb	46.8	33.2	540	37.3	3.60
APS-400F	3/4"	80-400 ft.lb	64.0	54.1	560	37.3	5.90
APS-600F	3/4"	120-600 ft.lb	64.0	54.1	930	37.3	6.30
APS-800F	3/4"	150-800 ft.lb	65.8	57.0	997	37.3	8.90
	1"		79.7	66.8			
APS-1000F	1"	200-1000 ft.lb	79.7	66.8	1729	37.3	11.70

Unit: mm

**Edition 01**

MAY 2020



**MATATAKITOYO**  
**TORQUE TOOLS**  
E-mail: matatakitoyo@gmail.com  
www.matatakitoyo.com

Manufacturer

**MATATAKITOYO TOOL CO., LTD.**

No. 63, Ln. 493, Sec. 3, Zhongshan Rd., Tanzi Dist.,

Taichung City 42754, Taiwan

TEL : 886-4-2533 5893

Made in Taiwan