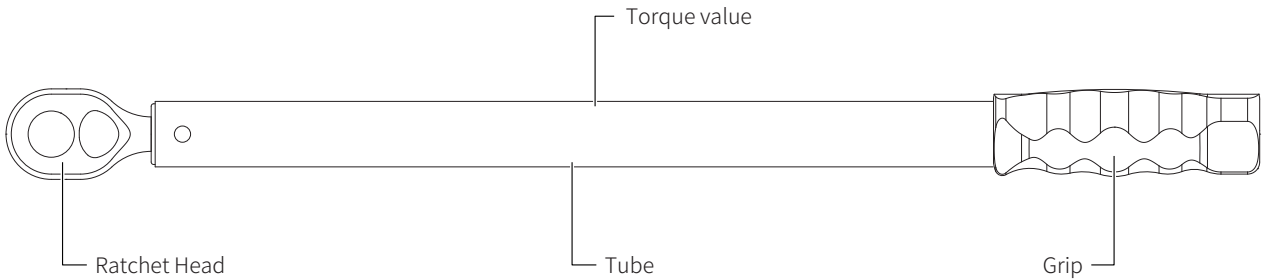


Torque Wrench Color Coded Pre-Set Type OPERATION MANUAL

Models covered

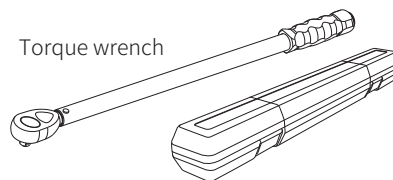
FPS



BEFORE STARTING

1. Study this instruction before use.
2. This torque wrench as calibrated and tested before leaving the factory is certified to meet the current standard specification and has an accuracy of $\pm 4\%$.
3. **THIS TOOL IS A PRECISION MEASUREMENT AND DESIGNED FOR MANUAL TIGHTENING FASTENERS ONLY. DO NOT USE IT AS A NUT BREAKER OR FOR ANY OTHER PURPOSE.**
4. Over torque will cause tool damage and personal injury.
5. Do not use this tool near rotating machinery.
6. Disassemble this tool or make any adjustments will result of losing accuracy and void the warranty.
7. Do not continuously apply force after hear click or feel shock.
8. Do not use any format of extension on the handle of the tool.
This will not only damage the tool, also affect the accuracy.
9. Do not immerse grease inside ratchet head.
It may cause unexpected damage.
10. Use special care at minimum torque setting.
11. Please wear gloves and goggles when working.

CONTENTS



Torque wrench



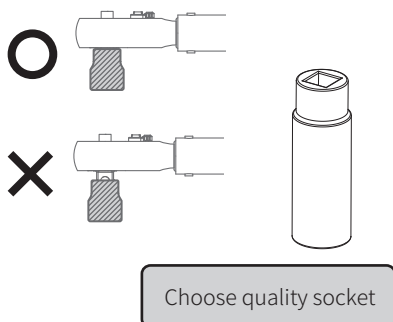
Manual

Supplied in a plastic box.

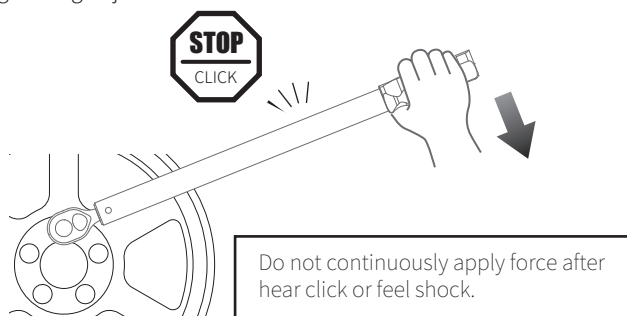


HOW TO USE

Insert square drive securely to the socket.

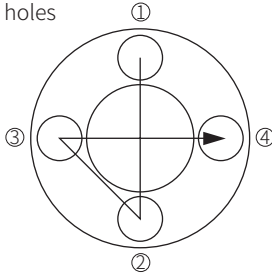


Please stop applying force when hear a CLICK sound.
Keep applying force to an object can cause damage on either torque wrench nor tightening object.

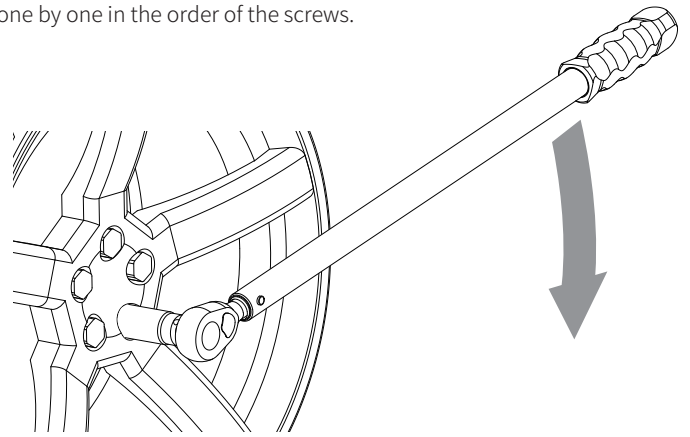
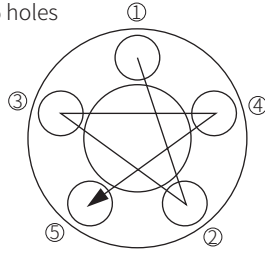


After all the nuts are installed, use a torque wrench to tighten them one by one in the order of the screws.

4 holes

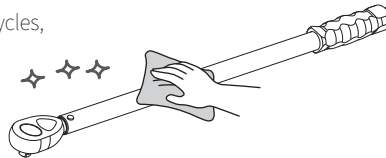


5 holes



MAINTENANCE AND STORAGE

1. If this tool has not been used for a period of time, it shall be preloaded several times to allow internal lubricant to recoat.
2. Clean this tool by wiping with a clean cloth after operation and storage in a dry environment. Do not dip any type of liquid in this tool. This may damage the internal of this tool.
3. This tool should be recalibrated a period of 12 months, or 5,000 cycles, whichever occurs first. To contact with local vendor, an authorized repair center for supporting.



TORQUE CONVERSION FACTORS

Units to be converted	Corresponding unit								
	=mN-m	=cN-m	=N-m	=ozf-in	=lbf-in	=lbf-ft	=gf-cm	=kgf-cm (kp-cm)	=kgf-m (kp-m)
1 mN-m	1	0.1	0.001	0.142	0.009	0.0007	10.2	0.01	0.0001
1 cN-m	10	1	0.01	1.416	0.088	0.007	102	0.102	0.001
1 N-m	1000	100	1	141.6	8.851	0.738	10197	10.2	0.102
1 ozf-in	7.062	0.706	0.007	1	0.0625	0.005	72	0.072	0.0007
1 lbf-in	113	11.3	0.113	16	1	0.083	1152.1	1.152	0.0115
1 lbf-ft	1356	135.6	1.356	192	12	1	13826	13.83	0.138
1 gf-cm	0.098	0.01	0.0001	0.014	0.0009	0.00007	1	0.001	0.00001
1 kgf-cm(kp-cm)	98.07	9.807	0.098	13.89	0.868	0.072	1000	1	0.01
1 kgf-m(kp-m)	9807	980.7	0.9807	1389	86.8	0.7233	100000	100	1

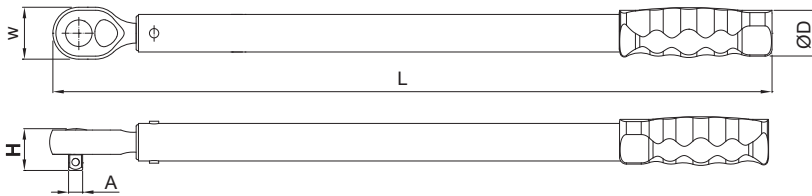
Conversion-formula :

Units to be converted × Factor = Corresponding unit

Example : Convert 5 lbf-ft into cN-m

Solution : 5 × 135.6 = 678 cN-m

SPECIFICATION



Accuracy : ± 4%

ITEM NO.	Ø A	Range		W	H	L	ØD	KG	Color
FPS-65F	1/2"	88 Nm	65 ft.lb	43.5	36.5	588	37.3	1.6	Yellow
FPS-80F	1/2"	108 Nm	80 ft.lb	43.5	36.5	588	37.3	1.6	Blue
FPS-100F	1/2"	135 Nm	100 ft.lb	43.5	36.5	588	37.3	1.6	Gray
FPS-120F	1/2"	163 Nm	120 ft.lb	43.5	36.5	588	37.3	1.6	White
FPS-140F	1/2"	190 Nm	140 ft.lb	43.5	36.5	588	37.3	1.6	Light Green

Unit : mm

Edition 01

MAY 2020



MATATAKITOYO
TORQUE TOOLS
 E-mail: matatakitoyo@gmail.com
 www.matatakitoyo.com

Manufacturer

MATATAKITOYO TOOL CO., LTD.

No. 63, Ln. 493, Sec. 3, Zhongshan Rd., Tanzi Dist.,

Taichung City 42754, Taiwan

TEL : 886-4-2533 5893

Made in Taiwan